



# PLAYWORK APPRENTICESHIP LEVEL 2

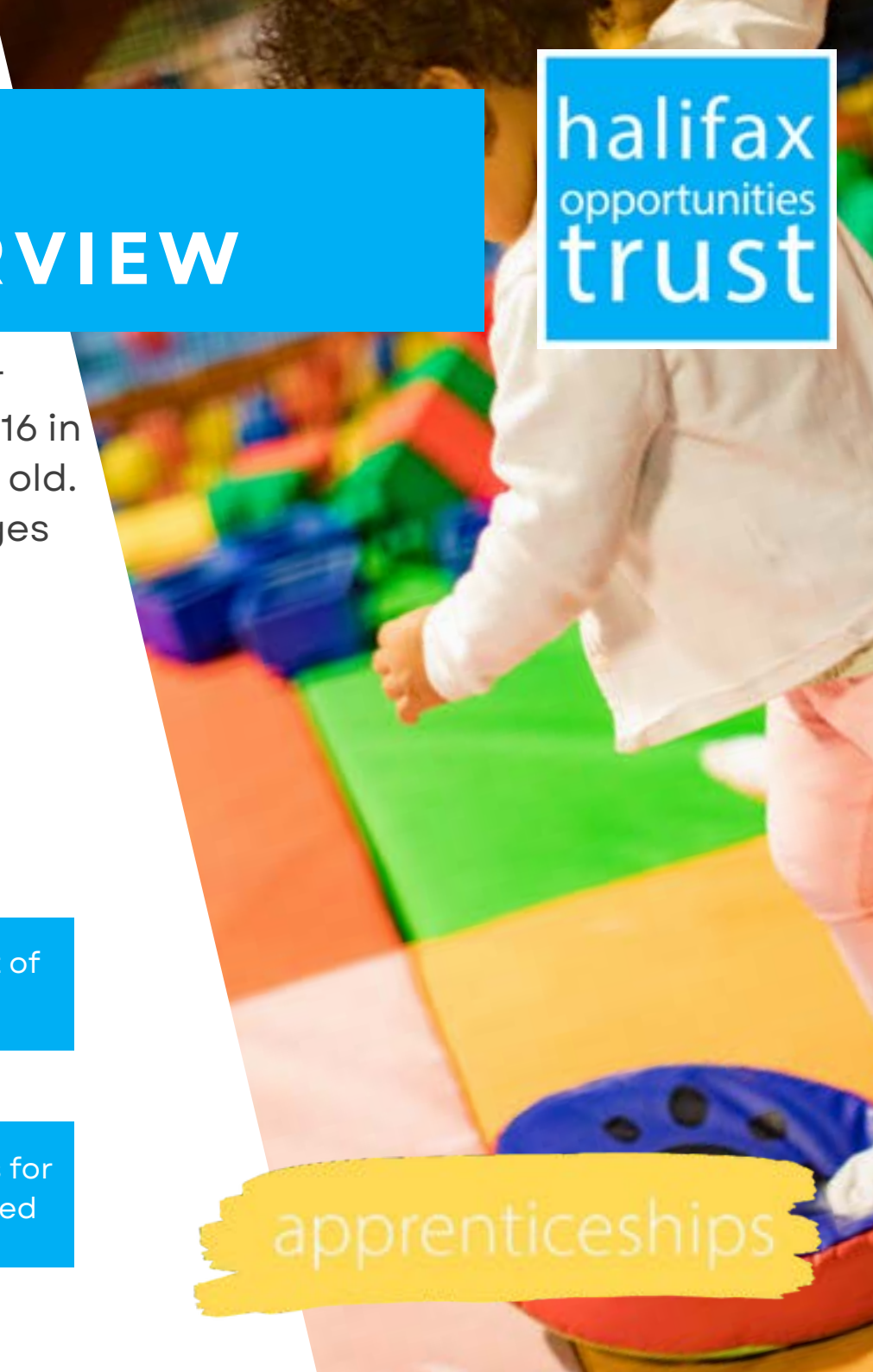
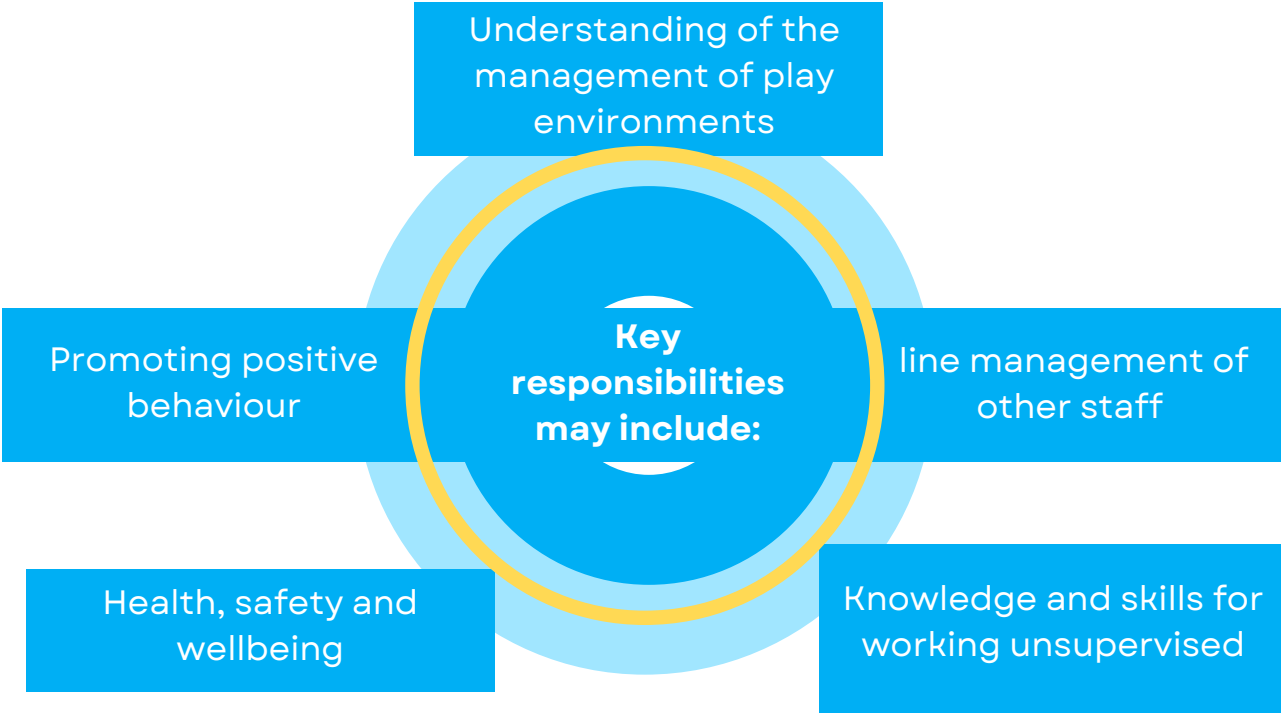
## OVERVIEW



# PLAYWORK LEVEL 2 APPRENTICESHIP OVERVIEW



This qualification is designed for learners who work, or wish to work, with children between the ages of 4 and 16 in playwork settings. Learners should be at least 18 years old. We do not set any other entry requirements but colleges or training providers may have their own.





Focus on the study of the role of the playworker



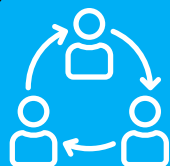
Offer breadth and depth of study, incorporating a key core of knowledge



Provide opportunities to acquire a number of practical and technical skills



Maintain healthy, safe and secure environments in playwork



Contribute to organisational frameworks to respond to all children's needs and preferences

## End Point Assessment

- Practical observation with questions and answers
- Professional discussion underpinned by a portfolio of evidence
- Grading and determination

**For further information please contact the apprenticeship team at HOT on 01422 347392**



# PROGRAMME DELIVERY

## Programme Length

Up to 15 months plus End-point Assessment

## Delivery Method

Programme delivered via 1-1 or group sessions and practice assessments at the workplace

## Blended Learning:

**Facilitated Learning:** Learners complete learning sessions with their Tutor every 4 - 6 weeks.

**Independent Learning:** Learners are expected to carry out self-study using online resources.

**Remote Visits:** Carried out between the learner and their HOT Tutor.

**Contact:** Learners have access to their HOT Tutor via email, telephone and Teams meetings.

**Practice Assessments:** Learners will complete practice and mock assessments at agreed milestones across the programme.

# PROGRAMME MODULES

## The Delivery Model is broken down over 10 topics:

- Roles and responsibilities of a playworker
- Health and safety
- Positive Behaviour
- Safeguarding
- Communication, Relationships and Teamwork
- Enabling environments and observing children's play
- Administration and managing resources
- Child Development and play
- Equality, Diversity and Inclusion
- Partnership working and behaviour

# END POINT ASSESSMENT

Must be completed in this order

ON-PROGRAMME  
LEARNING

PRACTICAL  
OBSERVATION WITH  
QUESTIONS  
AND ANSWERS

ON  
DEMAND  
TEST

PROFESSIONAL  
DISCUSSION  
UNDERPINNED BY  
A PORTFOLIO  
OF EVIDENCE

GRADING AND  
DETERMINATION

## GATEWAY

## ESFA CERTIFICATION

Minimum  
15 months  
on-  
programme  
learning

Requirement  
for Gateway  
English and  
maths at  
Level 2

Requirement  
for Gateway  
completed portfolio  
of evidence to  
support  
the professional  
discussion

The practical  
observation will be  
carried out over  
3 hours. The Q&A will  
last for 15 minutes  
and will take place  
at the end of each  
observation

60 minutes test  
consisting of 40  
questions. A minimum  
of 26 questions  
need to be answered  
correctly for a pass

60 minute  
professional  
discussion  
underpinned  
by the learner's  
portfolio  
of evidence

Grading  
Distinction,  
Pass or Fail